

Autumn 2022



Community

Contact us | 08 8212 7766 | admin@ldssa.org.au | www.ldssa.org.au

Mark, Cherrie and Greg are all long-time participants of The Broughton Art Society disability art sessions. All three are dedicated artists with their own unique approach to art, coloured by lives experienced and influenced by acquired brain injury or autism.

Mark is a prolific artist specialising in the constant development of subjects he finds interesting that make their way into extended series of paintings. Cherrie's drawing and painting style is bold and other worldly and can best be described as 'out there'.

Greg has become a master of pyrography, his work is decorative and highly detailed. Curated by Hans Kreiner, artist and arts educator. Hahndorf Academy 68 Main St, Hahndorf open daily 10am-5pm.



Welcome to our Autumn Edition!

In this quarters edition meet the new housemates across the LDS network, find out more about Mark's art exhibition, the LDS COVID response and much more.

From the desk of the CEO

Dear clients, families and advocates.

Thank you to all of you that were able to make it to our recent online community forum on 27 April. It was really great to see some of you there and to provide an update about LDS and where we are focussed for the future. I am really sad that we have not had more opportunities to gather as a community in the past two years due to various restrictions, however, I do hope that as things open up we get to see more of each other. We are planning to host more functions and gatherings later in the year so that we can catch up with you and our awesome clients like below..

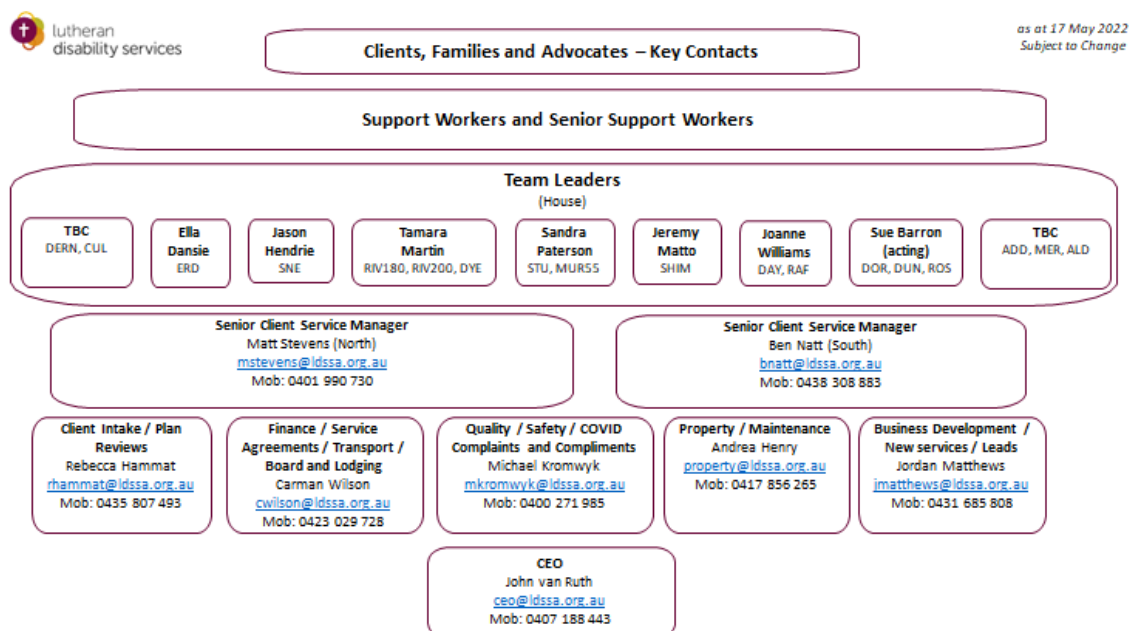


It was great to be able to share our values, and strategic directions. For those of you that were not able to attend, here is a brief re-cap of what I covered:

- LDS Values are Faith, Empowerment, Excellence and Fun. We believe, and everything we do, is based on the premise that we are loved by God and we are in community to serve each other, recognising the dignity and unique gifts that everyone has, both clients and staff alike.
- I expressed our thanks to all clients, families, advocates for the incredible way they have helped keep our clients safe during the past year or so. We are especially thank you for the way that everyone has kept up and compiled with the various health mandates.
- I welcomed and congratulated Ben Natt (South) and Matt Stevens (North) for their promotion to Senior Client Service Managers and all the new team leaders across Client Services.

From the desk of the CEO

- LDS has recently implemented a new Team Leader role which has replaced the previous role of Client Services Assistants. The expanded responsibilities and accountabilities of Team Leaders will include development of their staff in each team as well as helping deliver consistent quality and safe outcomes for our clients. We currently have nine Team Leaders who will each have the primary focus and care of a small number of houses and clients with a small dedicated awesome staff team that they manage to deliver services with consistency and reliability. Hopefully you will have all had a chance to meet and get to know your assigned team leader. Details are in the key contacts diagram.
- LDS future will see us continuing to focus on helping our clients thrive. At LDS, we want to be easy to deal with so we are implementing a number of improved processes and structures to make that happen. We are planning to continue our growth in supported independent living and community supports and we are seeking to increase the number of houses and clients we support in the next few years to ensure we remain financially sustainable and can continue to provide the unique model of supports based on our core values and mission of helping client's connect in Christian community.



- We have some exciting projects planned where we are partnering with Lutheran congregations and other churches to create new housing offerings as well as, when appropriate, LDS will invest in building suitable and affordable disability housing options to provide long term affordable homes for our clients to enjoy and call their own.

During our session we received a really great question about who clients and advocates should call within LDS. The summary of the key contacts is above for your reference. Please note this is subject to change and if in doubt please head to our website to the "Leadership" section under "About Us" which should have up to date information. I welcome you to contact me at any time, please either email ceo@ldssa.org.au or call me on 0407 188 443.

We are here to serve you and to serve each other. Thank you for being a part of the very special family we call LDS.

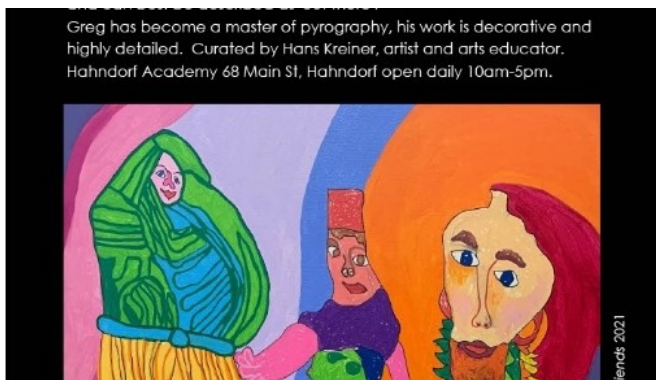
Blessings, JvR

Mark's Art Exhibition

LDS has been providing support to clients to achieve their life goals and to be able to participate in community.

Mark is an example of a client who loves to be creative and to express himself through his artwork.

Mark has been attending Broughton Arts for approximately 3 years. Marks visions of different worlds and planets are reflected in his art work. "I love going to class and learning how to show my visions through my artwork."



Mark has been a client of LDS for several years and lives independently at Shimron house.

Mark has the freedom to express himself through his art work with encouragement from family & LDS staff. Hanns his arts teacher at Broughton Arts encourages Mark to use bright colours, detail & imagination which is reflected in his work.

Hahndorf Academy has an exhibition of Marks unique paintings on from 9th April-31st May 2022 - 68 Main Street, Hahndorf SA 5245.

It's Like Chalk and Cheese

In February LDS welcomed four new clients that live in Klemzig to the LDS family. Since Andrew, Bradly, Rory and Leigh have joined LDS we have seen them all blossom and have asked the families how they are transitioning.

"We feel we can now relax and step back a bit knowing he is happy and in good hands."

"I was speaking with Bradly about all the wonderful things he is doing with Lutheran and how the support workers are so kind and caring towards him and I said it was like 'chalk and cheese'. Bradly probably didn't really understand but he thought it was funny and laughed, so I explained it carefully to him. So now when we speak on this subject, he says "it is like chalk and cheese" and has a good laugh. "

"All the SW's we have met have been very pleasant and helpful. Communicating with LDS office has been easy and replies are very prompt. We know Andrew can be difficult but from our perspective he has been much calmer and happier since the LDS transition. He now has a key SW whom he knows well and who understands his support needs."

"We are all so very happy with the change in Bradly. He is happy almost all the time. He is very settled with regular support workers and the fact that those care workers show him such kindness and make time for him."

"Personally, as Bradly's Guardian, I have been impressed that right from the start of our relationship with Lutheran Disability, that all levels of staff were happy to listen to things that I told them about Bradly. Instructions were made and all support workers had access to them. The staff have been very cooperative in carrying out instructions from doctors, psychologist etc. and even myself. This along with all Lutheran Disabilities other care policies makes for a very personal and happy atmosphere."

"I am impressed with the way that the Lutheran Disability houses are cared for. They are clean and beautifully organised. The houses supplied by Lutheran Disability are of a very high standard. This is another way that all clients are shown that they are very important people and worth having a lovely home to live in. The kindness and loving care towards all clients is always apparent."

"I personally have a peace of mind about Bradly that I have not experienced any concern. I trust the support workers and staff of any kind to do their very best for Bradly. I feel that I have a good working relationship with them and that, believe me, is a wonderful feeling. Thank you all for your genuine care of Bradly and all your clients. God bless."

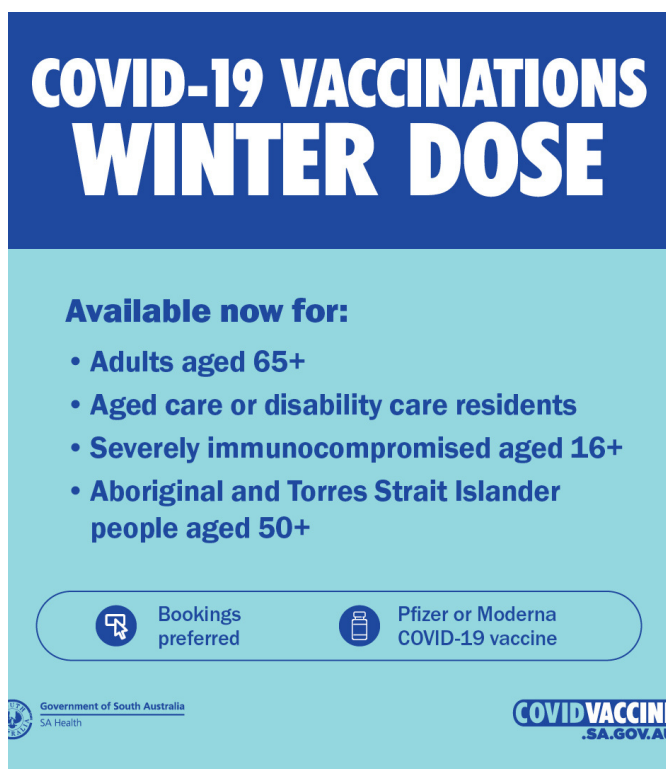


Welcome to all of our new clients and welcome to the LDS family.

COVID-19 Response

LDS clients, support workers and staff have been at the front line of the COVID-19 outbreak here in SA. Many disability providers in SA have experienced outbreaks and LDS is at the fore-front in infection control and outbreak management.



Since our last report LDS has been working with both clients and staff to manage the impact due to COVID. A number of clients and over 50 staff have been infected by COVID in recent months and we can report that all have recovered well.



**COVID-19 VACCINATIONS
WINTER DOSE**

Available now for:

- Adults aged 65+
- Aged care or disability care residents
- Severely immunocompromised aged 16+
- Aboriginal and Torres Strait Islander people aged 50+

 Bookings preferred  Pfizer or Moderna COVID-19 vaccine

Government of South Australia
SA Health

COVIDVACCINE
.SA.GOV.AU



LDS has been able to continue supports for clients during this time and we are continuing to maintain infection control protocols such as:

- Fully vaccinated staff
- Masks wearing by staff in all SIL homes
- Increased house cleaning
- Reminders around hand sanitation, social distancing & staying away from high traffic areas

Thank you to our community for your ongoing support.

Independence, Friends & Fish

LDS has been growing in recent months and in March we launched a new property in Edwardstown with three ladies coming together to live at the property.

This beautiful house has become a home with these lovely ladies adding their personal touch to the property.

Jenni was living at another LDS property and told her support worker that she loves her new house because she is more independent and has a lot of fun. Jenni also loves to cook and is enjoying assisting with meals for the whole house.



Sam is new to LDS and says that she is really enjoying the independence and having a say about her daily living. "I like having new friends and having support to make my meals" said Sam. "The staff are much better than what I had at my old place! The staff are so much nicer and funnier!"

Natalie is also a new client to LDS and told staff that she likes having more choices and being more independent, loves helping to cook and having assistance with household chores. For Natalie, having friendly & caring staff is also important.

What everyone loves is feeding the fish!

Jenni, Sam & Natalie have made this house their home and we welcome them to the LDS Family!

LDS Buys a House

Back in January LDS received notice that the WEL house lease was not going to be renewed and so the hunt for a new house for the WEL team was underway.

After a comprehensive search for a new property to rent or buy was undertaken LDS fell in love with a new house in Plympton and so the journey to buy RAF was commenced.

After chatting with the current WEL clients we understood that everyone wanted to stay living together and we were able to find this beautiful leafy home with 4 bedrooms close to the WEL house and everyone's activities.



The last seven weeks has seen ups and downs as transitions are usually challenging and moving is stressful, the clients are settling into their lovely new home and these are their highlights:

- Catherine: "I love the art and craft space."
- Jake: Likes all the built in cupboards
- David: Likes the outside area, it's nice and big.
- Terry: "I love my new big room"

LDS also loves this new property and our strategy to ensure that clients can have homes for the long term that are safe and secure. Our plan is to have many more RAFs in partnership with Churches and community partners over the next few years.

Catherine, Jake, David and Terry we are so glad you love your new home!

VACANCY ALERT



Unley - Newly Renovated Home

At LDS we help to create happy homes for our clients. Our clients have the same right as everyone to enjoy life, be integrated into the community and to have a happy home. Our specialist team of support workers are trained to serve the clients to ensure that they can achieve their life goals including making sure that there is fun at home, work and play!

Available now



LDS has a vacancy in our Unley house called Shimron. This house was the first home in the LDS network and has been extensively renovated during 2021.

This home is available now with a vacancy located within a 2 bedroom fully contained unit on the property. 6 clients called Shimron home spread across the three tenancies, fully supported with a 24/7 passive overnight support team. Applicants will need to be NDIS approved, Supported Independent Living approval and SDA funding.

This lovely picturesque home has plenty of garden space to relax, look after the chickens or to plant vegetables. Inside there is a large open plan kitchen, games room and TV room. This is a house to make new friendships and to get involved in your local community.

Situated in a quiet leafy street in Unley near parks and Unley shopping centre or a quick bus ride to the city, this is a sought after happy home right in the heart of the city fringe.

If you know a suitable person to come and share our happy home please call Jordan Matthews on 0431 685 808 or email jmatthews@ldssa.org.au.

Vaccinations

LDS is encouraging all clients, staff and families to have:

COVID 3rd Vaccination
COVID Winter Booster
Flu Vaccination

Any client in a SIL or who is vulnerable are entitled to each of these vaccinations.

Please speak with your Team Leader to arrange an appointment today



HOW YOU CAN SUPPORT THE LDS MISSION



PRAY FOR OUR MISSION

Include LDS in your prayers and ask God to bless our mission of delivering Faith, Empowerment and Excellence to people living with disability.



VOLUNTEER YOUR TIME

Do you have a special skill that you'd love to share with a LDS Client? Our Clients love to cook, create, play sport and help in the community. If you'd like to be involved in our mission please contact us on 08 8212 7766 or visit our website.



SERVING COMMUNITIES

Do you have community activities, projects, jobs where people living with a disability can be involved? Reach out to us as our community is looking to serve the wider community and to work with you to build strong, integrated communities.



HELP BUILD OUR NETWORK

LDS wants to positively impact in the lives of people with disability. If your community has a disused building, land or other facility that could be converted to disability housing please talk to us.



DONATE & OFFERINGS

You can donate direct to LDS by calling 08 8212 7766 or visiting our website. You can donate to LDS through leaving a legacy, setting a bequest or investing in housing for people with a disability. If your Church would like to dedicate a special offering to our mission please feel free to get in touch with us.

LEARN MORE AT WWW.LDSSA.ORG.AU OR 08 8212 7766



SUPPORTING INDEPENDENCE AND INDIVIDUALITY

Creating happy homes through supported independent living, specialist disability accommodation and community participation programs. Empowering adults living with a disability to achieve their life goals.



lutheran
disability services

08 8212 7766 | admin@ldssa.org.au | ldssa.org.au



Stay Connected

facebook

Make sure that you follow LDS on our facebook page. It is wonderful to see clients out-n-about and experiencing life to the full.

[Click Here](https://www.facebook.com/Lutheran-Disability-Services-SA-227010588122374) or
<https://www.facebook.com/Lutheran-Disability-Services-SA-227010588122374>



lutheran
disability services



Easter Fun at RIV